



BELUGA Spec Sheet



Company Information:



TEAM

Gian Miguel Sero Del Mundo
 Yu Zhang
 Richard Lawrence
 Hans Ryan Tanubrata
 Hongseo Yoon
 Tun Jian Tan
 Akshay Kapur
 Mohammad Hanif Dean Nadhif
 Gaurav Vijai Jeandani
 Kin Ip Mong
 Aadhithya Vignesh Jeyakumar
 Randitya Setyawan Mohamad
 Dennis Chen
 Heng Su
 Daniel Cheung

Distance to Long Beach

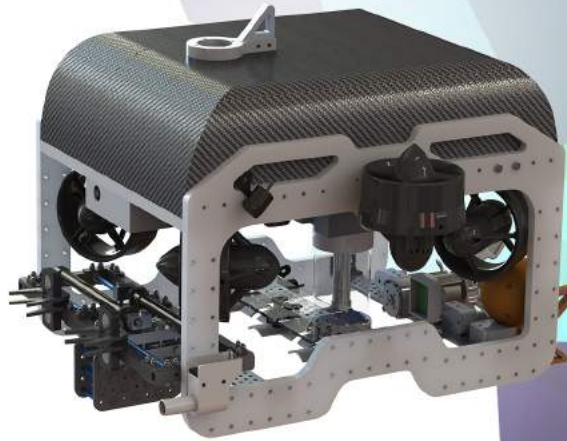
11,664 km



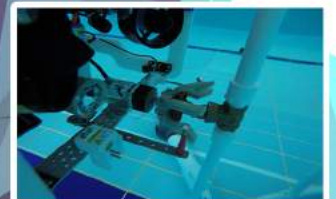
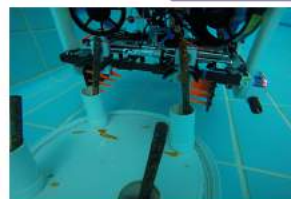
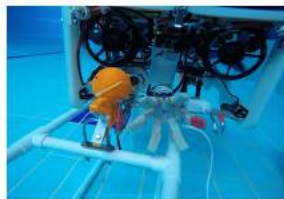
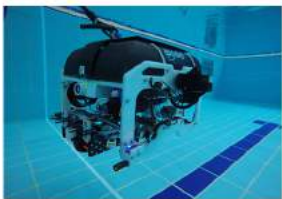
Chief Executive Officer		Year 2
Chief Technical Officer		Year 1
Chief Financial Officer		Year 2
Electronic Engineer		Year 2
Electronic Engineer		Year 2
Electronic Engineer		Year 1
Electronic Engineer		Year 2
Electronic Engineer		Year 2
Mechanical Engineer		Year 2
Mechanical Engineer		Year 1
Mechanical Engineer		Year 1
Software Engineer		Year 2
Software Engineer		Year 2
Software Engineer		Year 2
Software Engineer		Year 1

ROV Specifications:

- STABILITY**
Flight Time: > 75 hours
Design and Build Time: > 2000 hours
- DIMENSIONS**
Length, Width, Height:
530 mm x 515 mm x 350 mm
- TOP SPEED 0.8 m/s**
- ROV MASS 11 kg**
- TETHER MASS 3.5kg**
- BUOYANCY**
Polystyrene foam reinforced with carbon-fiber composite
- FRAMEWORK**
Dual-layer design
Top - modular electronic housing and buoyancy system
Bottom - sectional manipulator layout
Material - High Density Polyethylene (HDPE)



- ELECTRONIC SYSTEM**
Modular electronics setup
CAN Bus integration
Standardized electronics module
- SENSOR**
Inertial Measurement Unit
Pressure sensor
- SOFTWARE SYSTEM**
ROS integration
User friendly web UI
Kalman IMU Filter
- SAFETY FEATURES**
Shrouded thrusters
Strain relief on tether
Warning labels on moving parts
- SPECIAL FEATURES**
5 DoF movements
Raspi-CAN back-up system
Auto-depth/heading stabilization
- TOTAL COST**
USD 3921.13



Hong Kong

