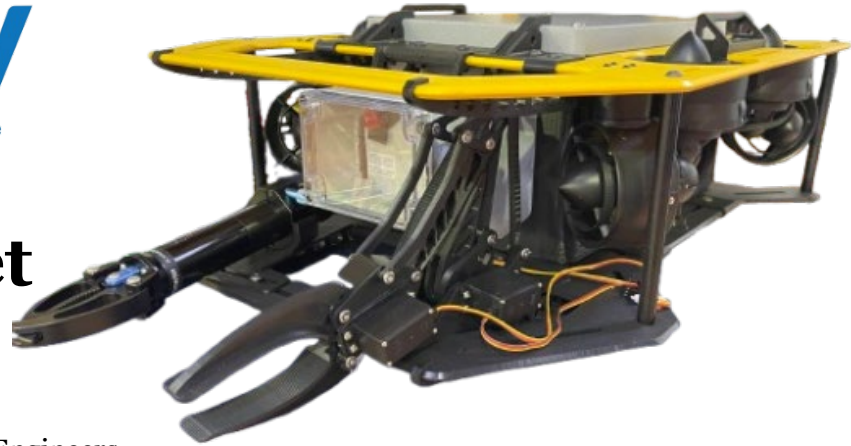




Company Spec Sheet



WUROV Company Info

School Club: Institute of Electrical and Electronics Engineers

University: Wentworth Institute of Technology

Location: Boston, Massachusetts, USA

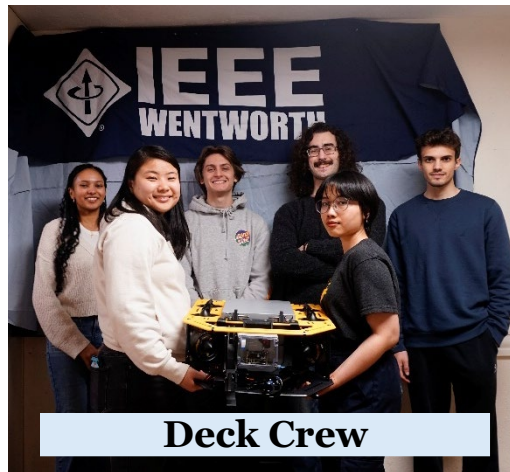
Returning Team: 6th Time MATE Competition Participants

Traveled: 904 Miles | 1455 Km

2024 – 2025: Yellow-Crab

ROV Overall Specs

Length 0.61 m
Width 0.457 m
Height 0.216 m
Weight 18.15 kg
Total Cost \$4,341
Design & Build..... +6,000 hours
ROV Name Yellow-Crab



Deck Crew

Team Members

Programming:

'25 Victor Lomba, Team Lead

'25 Sophia Sistachs*

'27 Clayton Easely

Electrical:

'26 Noah DeGrazia, Team Lead, CTO

'25 Belinda Truong, CEO

'27 Quin Cabral, Safety Officer

'27 Nan Mozan

Mechanical:

'26 Lulya Tesfamicael, Team Lead

'26 Liam Kayyal*

'27 Olivia DeMelo

'27 Roger Wong

'27 Sebastian Ruiz

Mentors:

Ph.D. Saurav Basnet

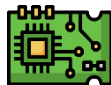
**New Members*

Special Features



ROS1 Architecture

Modular open-source design for networking with various modules.



Modular Electronics

Allows for fast troubleshooting, and fast compatibility with additional systems.



GO-BGC Float

Retrieves depth data in the ocean in vertical profiles.

Safety Features



Strain Relief

Allow quick removal of ROV from water in emergency situations.



Thruster Guards

Prevents objects from interfering with motors.



Fuse

A 30-amp fuse within 30cm of the power connector to prevent damages from current spikes.

